

# Zebra Midge

## Recipe

- Hook: Scud or buzzer, #14-22
- Thread: Gudebrod 8/0, black
- Weight: Nickel (or tungsten) bead
- Body: Tying thread or floss, black
- Rib: Silver wire, fine

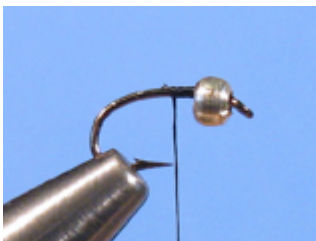
The Zebra Midge imitates an aquatic insect called a "midge" that lives in the mud and silt along the submerged edges of rivers and lakes. Ranging in size from #12 down to #22 and smaller, there are 700 species in North America! The one midge we are interested in is the Chironomidae. Chironomids are a family of midge that is likely to be found inhabiting the edges of your favorite lakes and streams. Compared to other aquatic insects, the midge is most like the mayfly in that it hatches from an egg, lives on the bottom of the river or lake, pupates in an exoskeleton, then emerges from the bottom of its watery world swimming and floating to the surface, dangling in the surface film as the adult midge escapes its pupal shuck. The adult flies about, mates and lays its eggs in the water from which it came. Some midge experts compare the midge to the mosquito. They are similar in every way except the midge doesn't suck blood and the Chironomidae family don't bite. Nice folks, the Chironomidae's.

## Pattern

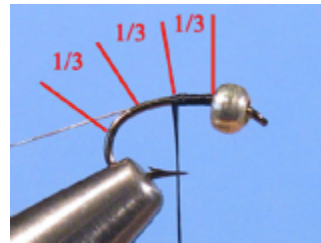
Step 1: Slide a bead onto the hook and mount it in the vise.



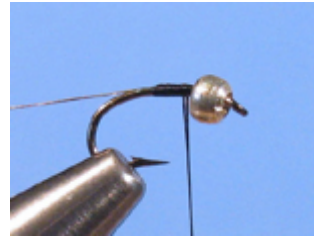
Step 2: Tie in the thread.



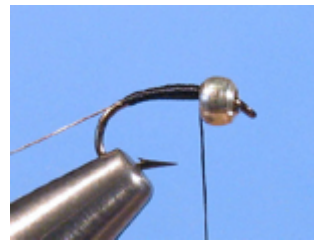
Step 3: Tie in the silver wire and start looking at the hook in thirds. Cover 1/3 with thread.



Step 4: Wrap the thread back up to the bead.

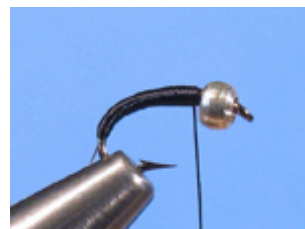


Step 5: Wrap the thread down to the next third and back again.

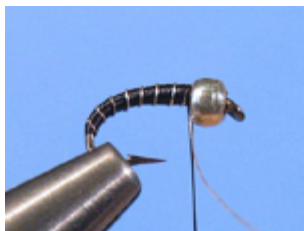


Step 6: Wrap the thread down to the last 1/3 point and back to the bead.

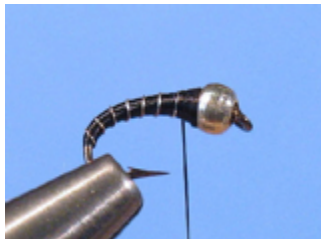
Step 7: Wrap the body one more time down and back. Flatten the thread completely for this last time by spinning the bobbin counter clockwise. Then wrap it all the way down and back up again. Stop a little now and then to flatten the thread again.



Step 8: Spiral wrap the wire over the body. Tie it in behind the bead and cut the waste.



Step 9: Build up a thread "cone" behind the bead.



Step 10: Whip finish behind the bead.

For variants, use different color threads, or tinsel instead of wire.

